



DeviceSolutions
Imagination. Realized.

Device Solutions Modem Reference Design Specifications

Overview

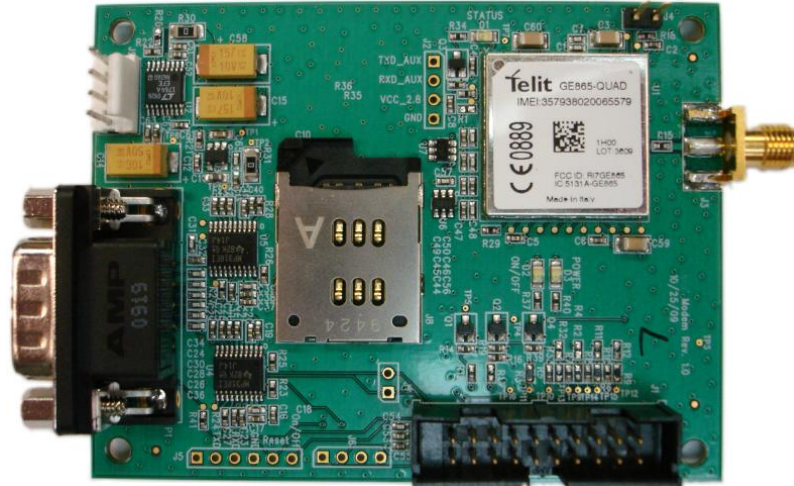
The Device Solutions Modem reference design board consists of a Telit GE865 quad-band GSM module and associated circuitry allowing interfaces to the modem from a variety of external devices and system applications.

The modem has a full RS-232 serial port with DB9 connector and an external connection for either active or passive antennas. Five general purpose input/output signals are provided for monitoring and control.

The Device Solutions Modem reference board is PTCRB-certified as an end product.

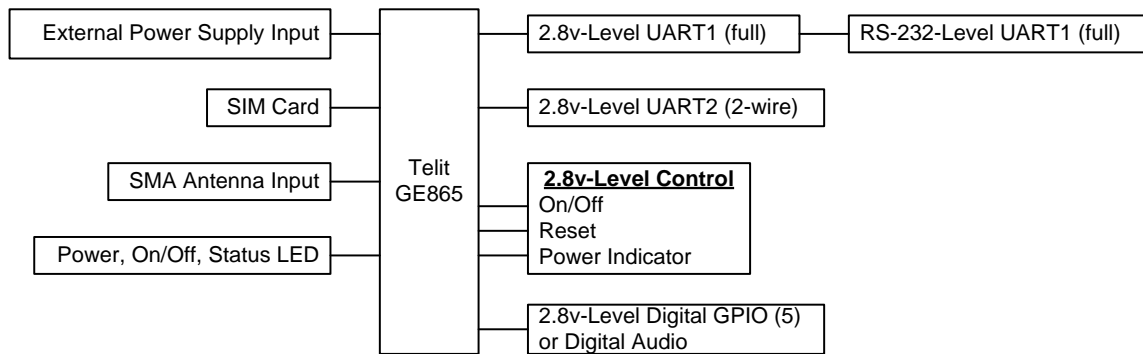
The modem can be used as a standalone device utilizing either native AT commands or embedded Python scripts.

The modem may also be mated with, and controlled by a Device Solutions Controller board reference design. This microprocessor-based controller can then be customized with embedded software allowing extended features such as USB, CAN, analog I/O, and GPS capability. Both modem and controller board footprints are the same, and are designed to be stacked together with mating connectors.



Actual Size

Block Diagram



Summary of Features

Network

Quad-band GSM/GPRS

Serial Communication

Full 7-wire RS-232 serial port
Auxiliary 2-wire CMOS serial port

External Hardware Control

Power on / off
On / off status indicator
Reset

General Purpose IO

Five general-purpose digital
input/output (GPIO) with
programmable direction

Digital Audio

Two-way digital audio interface

Software Options

Stand alone with AT commands
Stand alone with Python script
DS Controller with embedded solutions

Electrical

Single 4.5 to 7.5VDC supply voltage

Antenna

External SMA connection

SIM Card

Removable SIM Card

Mechanical

83mm x 63mm (board outline)
100mm x 63mm with connectors